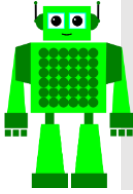


The Suffix -ly



Adverbs describe verbs. The suffix -ly can often be added to an adjective to change it into an adverb. Quick is an adjective but if we add -ly we make the adverb quickly. If the adjective ends in a 'y', change the 'y' to an 'i' and add -ly e.g. lazy changes to lazily. If the adjective ends in 'le', remove the 'le' and add -ly e.g. gentle changes to gently.

1) Change these adjectives into adverbs by adding the suffix -ly.

rough	_____	sensible	_____
beautiful	_____	proud	_____
crazy	_____	angry	_____
careful	_____	quiet	_____
bright	_____	brave	_____
happy	_____	simple	_____

2) Choose a word from the word bank below and change it into an adverb to complete each sentence.

sudden loud safe greedy tired curious

Fortunately, the plane managed to land _____ in the storm.

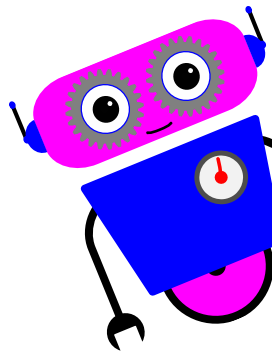
The children climbed _____ into bed after a very long day.

I was woken _____ by a deafening knock at the door.

Evan looked at the strange package and unwrapped it _____.

The crowd cheered _____ when their team won the match.

The bear _____ gobbled up its food.



3) Circle one word in each group that is not an adverb.

a) cheerfully gracefully funny slowly

b) soft hungrily excitedly sadly

c) crossly foolish wearily joyfully

